



VIETKAI
To be kind

VIET KAI

MICROFIBER LEATHER CATALOGUE



VIETKAI
To be kind

Viet Kai is proud to be a major local supplier of high-quality microfiber vegan leather to manufacturers such as furniture (particularly sofas), automobile interior, bags, footwear, etc.



Our vision

Help people have an access to and develop a habit to use environmentally friendly and high-quality materials



Our mission

Introducing and supporting microfiber VEGAN FAUX LEATHER knowledge, and resilient microfiber leather with competitive price



Our values

Three core values:

- Love changes the world
- Smile has power
- Sharing touches the heart





VIETKAI
To be kind

VK1

Bags | Car Seats | Shoes

In Stock Colors



VK110



VK111



VK112



VK113



VK114



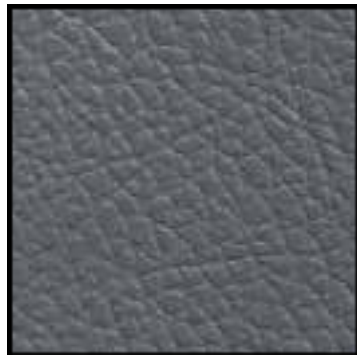
VK115



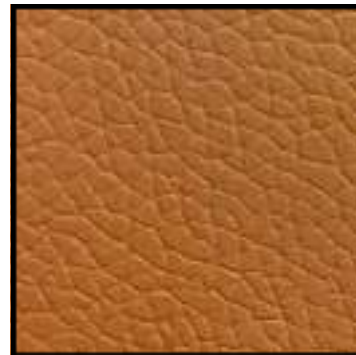
VK116



VK117



VK118



VK119



VK120



VK121



VK122

Matt Surface
Softness: ★★★★★
Thickness: ≥1.4mm
Width: 1.37m

www.vietkai.com
vkleather003@vietkai.com
Phone: +84 0971 472 494
WhatsApp: +84 0971 472 494

IMPORTANT NOTE: While we always push ourselves to provide accurate imagery and color, please remember that materials may vary from swatch photos due to a variety of factors including lighting, monitor calibration, and dye lot changes. For color-critical use cases, we recommend reviewing a physical swatch.



VIETKAI
To be kind

VK1

Bags | Car Seats | Shoes

Technical Specifications

Matt Surface
 Softness: ★★★★★
 Thickness: ≥1.4mm
 Width: 1.37m

Test Item	Unit	Standard Value	Testing Standards	
Tensile	Warp	≥250	ISO 1421:2016	
	Weft	≥300		
Elongation at break	Warp	≥15	ISO 1421:2016	
	Weft	≥20		
Tearing	Warp	≥60	ISO 4674-1:2016	
	Weft	≥60		
Wear-resistant	Martindale	Times	100,000	ISO 5470-2:2003
FoldingFastness	Normal	Times	100,000	ISO 5402-1:2011
	Low (- 205)	Times	30,000	
Yellowing Resistance	A method	Level	≥4	ISO 105-B02:2014
Strip Load	Warp/Weft	N/3cm	≥60	ISO 1421:2016
Color Fastness	Dry Rub		≥4	ISO 105-X12
	Wet Wipe	≥3,5		
	Sweat	≥3.0		
Hydrolysis Resistance	70°C x95%RH Constant temperature and humidity for 7 weeks	After 7 weeks, the surface will not crack, powder or delaminate		ISO 2418:2002 ASTM D1148-13

www.vietkai.com
 vkleather003@vietkai.com
 Phone: +84 0971 472 494
 WhatsApp: +84 0971 472 494



VIETKAI
 To be kind

VK2

Bags | Car Seats | Shoes | Sofa

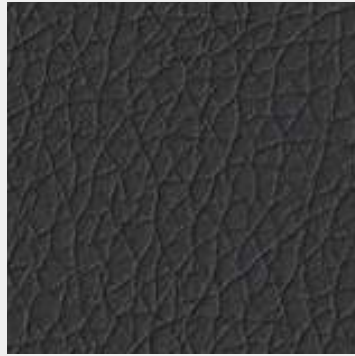


VIETKAI
To be kind

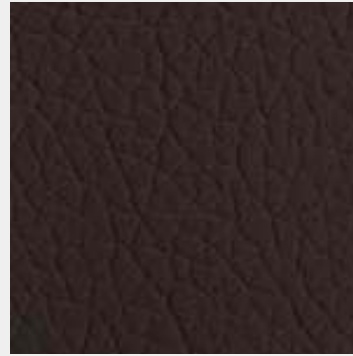
VK2

Bags | Car Seats | Shoes | Sofa

In Stock Colors



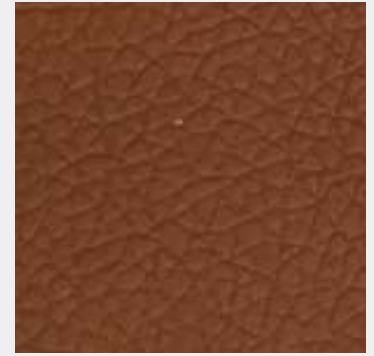
VK201



VK202



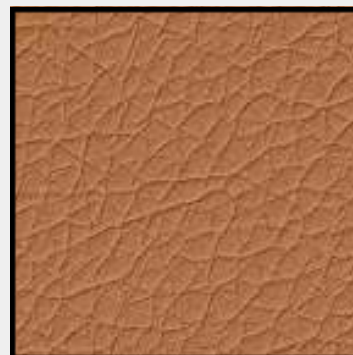
VK203



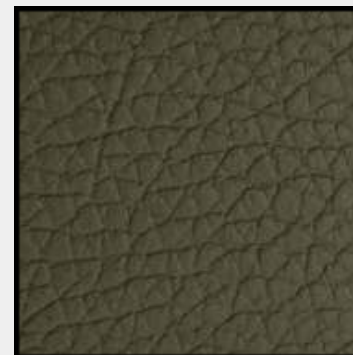
VK204



VK205



VK206



VK207



VK208



VK209



VK210



VK211



VK212



VK213



VK214



VK215



VK216

Matt Surface
Softness: ★★★★★
Thickness: ≥1.4mm
Width: 1.37m

www.vietkai.com
vkleather003@vietkai.com
Phone: +84 0971 472 494
WhatsApp: +84 0971 472 494

IMPORTANT NOTE: While we always push ourselves to provide accurate imagery and color, please remember that materials may vary from swatch photos due to a variety of factors including lighting, monitor calibration, and dye lot changes. For color-critical use cases, we recommend reviewing a physical swatch.



VIETKAI
To be kind

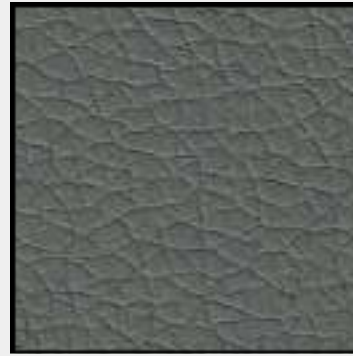
VK2

Bags | Car Seats | Shoes | Sofa

In Stock Colors



VK217



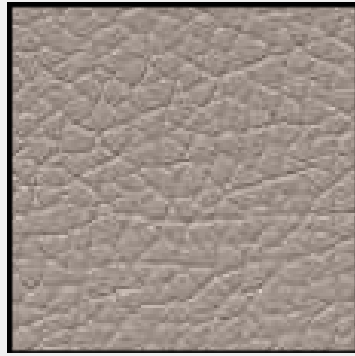
VK218



VK219



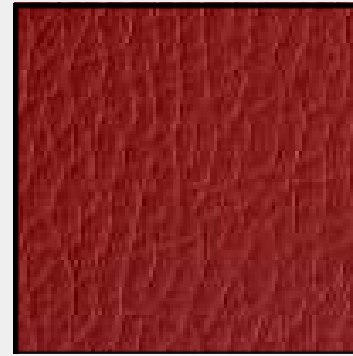
VK220



VK221



VK222



VK223



VK224

Matt Surface

Softness: ★★★★★

Thickness: $\geq 1.4\text{mm}$

Width: 1.37m

www.vietkai.com
vkleather003@vietkai.com
Phone: +84 0971 472 494
WhatsApp: +84 0971 472 494

IMPORTANT NOTE: While we always push ourselves to provide accurate imagery and color, please remember that materials may vary from swatch photos due to a variety of factors including lighting, monitor calibration, and dye lot changes. For color-critical use cases, we recommend reviewing a physical swatch.



VIETKAI
To be kind

VK2

Bags | Car Seats | Shoes | Sofa

Technical Specifications

Matt Surface
 Softness: ★★★★★
 Thickness: ≥1.4mm
 Width: 1.37m

Test Item	Unit	Standard Value	Testing Standards	
Tensile	Warp	≥250	ISO 1421:2016	
	Weft	≥300		
Elongation at break	Warp	≥15	ISO 1421:2016	
	Weft	≥20		
Tearing	Warp	≥60	ISO 4674-1:2016	
	Weft	≥60		
Wear-resistant	Martindale	Times	100,000	ISO 5470-2:2003
FoldingFastness	Normal	Times	100,000	ISO 5402-1:2011
	Low (- 205)	Times	30,000	
Yellowing Resistance	A method	Level	≥4	ISO 105-B02:2014
Strip Load	Warp/Weft	N/3cm	≥60	ISO 1421:2016
Color Fastness	Dry Rub		≥4	ISO 105-X12
	Wet Wipe	≥3,5		
	Sweat	≥3.0		
Hydrolysis Resistance	70°C x95%RH Constant temperature and humidity for 7 weeks	After 7 weeks, the surface will not crack, powder or delaminate		ISO 2418:2002 ASTM D1148-13

www.vietkai.com
 vkleather003@vietkai.com
 Phone: +84 0971 472 494
 WhatsApp: +84 0971 472 494



VIETKAI
 To be kind

VK2

Bags | Car Seats | Shoes | Sofa



VIETKAI
To be kind

VK3

Bags | Car Seats | Shoes | Sofa

In Stock Colors



VK311



VK312



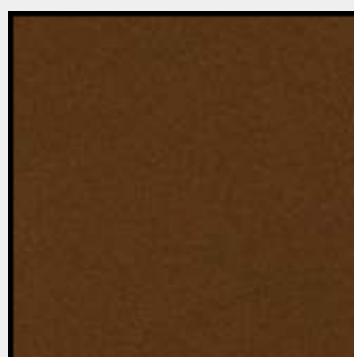
VK313



VK314



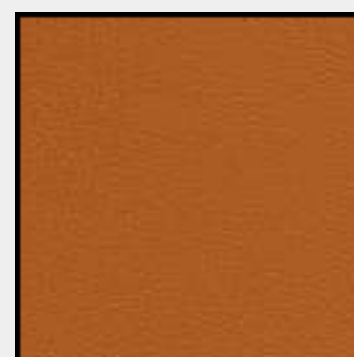
VK315



VK316



VK317



VK318



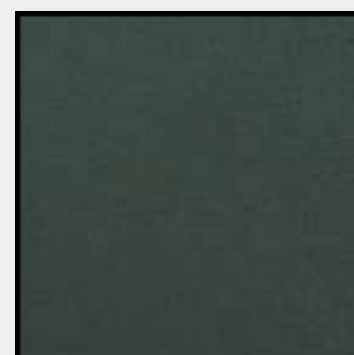
VK319



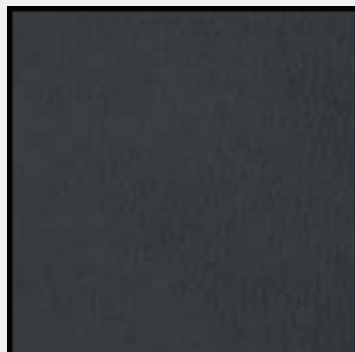
VK320



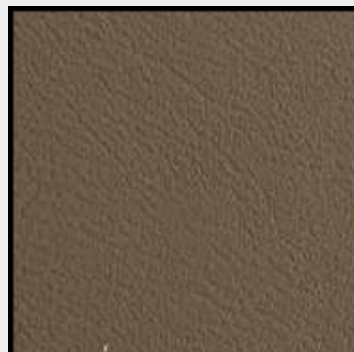
VK321



VK322



VK323



VK324



VK325



VK326

Matt Surface
Softness: ★★★★★
Thickness: ≥1.2mm
Width: 1.37m

www.vietkai.com
vkleather003@vietkai.com
Phone: +84 0971 472 494
WhatsApp: +84 0971 472 494

IMPORTANT NOTE: While we always push ourselves to provide accurate imagery and color, please remember that materials may vary from swatch photos due to a variety of factors including lighting, monitor calibration, and dye lot changes. For color-critical use cases, we recommend reviewing a physical swatch.



VIETKAI
To be kind

VK3

Bags | Car Seats | Shoes | Sofa

In Stock Colors



VK327



VK328



VK329



VK330



VK331



VK332



VK333



VK334

Matt Surface
Softness: ★★★★★
Thickness: $\geq 1.2\text{mm}$
Width: 1.37m

www.vietkai.com
vkleather003@vietkai.com
Phone: +84 0971 472 494
WhatsApp: +84 0971 472 494

IMPORTANT NOTE: While we always push ourselves to provide accurate imagery and color, please remember that materials may vary from swatch photos due to a variety of factors including lighting, monitor calibration, and dye lot changes. For color-critical use cases, we recommend reviewing a physical swatch.



VIETKAI
To be kind

VK3

Bags | Car Seats | Shoes | Sofa

Technical Specifications

Matt Surface
 Softness: ★★★★★
 Thickness: ≥1.2mm
 Width: 1.37m

Test Item	Unit	Standard Value	Testing Standards	
Tensile	Warp	≥250	ISO 1421:2016	
	Weft	≥300		
Elongation at break	Warp	≥15	ISO 1421:2016	
	Weft	≥20		
Tearing	Warp	≥60	ISO 4674-1:2016	
	Weft	≥60		
Wear-resistant	Martindale	Times	100,000	ISO 5470-2:2003
FoldingFastness	Normal	Times	100,000	ISO 5402-1:2011
	Low (- 205)	Times	30,000	
Yellowing Resistance	A method	Level	≥4	ISO 105-B02:2014
Strip Load	Warp/Weft	N/3cm	≥60	ISO 1421:2016
Color Fastness	Dry Rub		≥4	ISO 105-X12
	Wet Wipe	≥3,5		
	Sweat	≥3.0		
Hydrolysis Resistance	70°C x95%RH Constant temperature and humidity for 7 weeks	After 7 weeks, the surface will not crack, powder or delaminate		ISO 2418:2002 ASTM D1148-13

www.vietkai.com
 vkleather003@vietkai.com
 Phone: +84 0971 472 494
 WhatsApp: +84 0971 472 494



VIETKAI
 To be kind

VK3

Bags | Car Seats | Shoes | Sofa



VIETKAI
To be kind

VK6

Bags | Car Seats | Shoes | Sofa

In Stock Colors



VK620



VK621



VK622



VK623



VK624



VK625



VK626



VK627



VK628



VK629



VK630



VK631



VK632



VK633



VK634



VK635

Matt Surface
Softness: ★★★★★
Thickness: ≥1.4mm
Width: 1.37m

www.vietkai.com
vkleather003@vietkai.com
Phone: +84 0971 472 494
WhatsApp: +84 0971 472 494

IMPORTANT NOTE: While we always push ourselves to provide accurate imagery and color, please remember that materials may vary from swatch photos due to a variety of factors including lighting, monitor calibration, and dye lot changes. For color-critical use cases, we recommend reviewing a physical swatch.



VIETKAI
To be kind

VK6

Bags | Car Seats | Shoes | Sofa

Technical Specifications

Matt Surface
 Softness: ★★★★★
 Thickness: ≥1.4mm
 Width: 1.37m

Test Item	Unit	Standard Value	Testing Standards	
Tensile	Warp	≥250	ISO 1421:2016	
	Weft	≥300		
Elongation at break	Warp	≥15	ISO 1421:2016	
	Weft	≥20		
Tearing	Warp	≥60	ISO 4674-1:2016	
	Weft	≥60		
Wear-resistant	Martindale	Times	100,000	ISO 5470-2:2003
FoldingFastness	Normal	Times	100,000	ISO 5402-1:2011
	Low (- 205)	Times	30,000	
Yellowing Resistance	A method	Level	≥4	ISO 105-B02:2014
Strip Load	Warp/Weft	N/3cm	≥60	ISO 1421:2016
Color Fastness	Dry Rub		≥4	ISO 105-X12
	Wet Wipe	≥3,5		
	Sweat	≥3.0		
Hydrolysis Resistance	70°C x95%RH Constant temperature and humidity for 7 weeks	After 7 weeks, the surface will not crack, powder or delaminate		ISO 2418:2002 ASTM D1148-13

www.vietkai.com
 vkleather003@vietkai.com
 Phone: +84 0971 472 494
 WhatsApp: +84 0971 472 494



VIETKAI
 To be kind

VK6

Bags | Car Seats | Shoes | Sofa



VIETKAI
To be kind

VK8

Bags | Car Seats | Shoes | Sofa

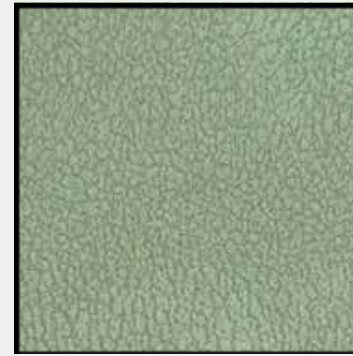
In Stock Colors



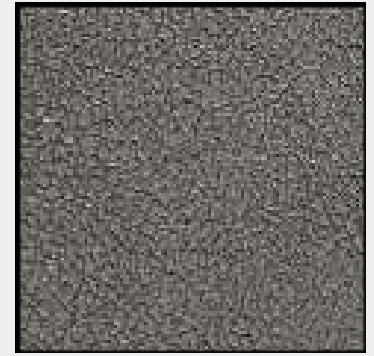
VK820



VK821



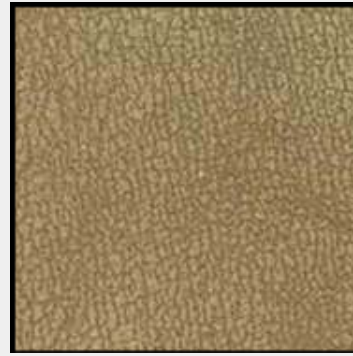
VK822



VK823



VK824



VK825



VK826



VK827

Matt Surface

Softness: ★★★★★

Thickness: ≥1.4mm

Width: 1.37m

www.vietkai.com
vkleather003@vietkai.com
Phone: +84 0971 472 494
WhatsApp: +84 0971 472 494

IMPORTANT NOTE: While we always push ourselves to provide accurate imagery and color, please remember that materials may vary from swatch photos due to a variety of factors including lighting, monitor calibration, and dye lot changes. For color-critical use cases, we recommend reviewing a physical swatch.



VIETKAI
To be kind

VK8

Bags | Car Seats | Shoes | Sofa

Technical Specifications

Matt Surface
Softness: ★★★★★
Thickness: $\geq 1.4\text{mm}$
Width: 1.37m

	Test Item	Unit	Standard Value	Testing Standards
Tensile	Warp	N/3cm	≥ 250	ISO 1421:2016
	Weft		≥ 300	
Elongation at break	Warp	%	≥ 15	ISO 1421:2016
	Weft		≥ 20	
Tearing	Warp	N/3cm	≥ 60	ISO 4674-1:2016
	Weft		≥ 60	
Wear-resistant	Martindale	Times	100,000	ISO 5470-2:2003
FoldingFastness	Normal	Times	100,000	ISO 5402-1:2011
	Low (- 205)	Times	30,000	
Yellowing Resistance	A method	Level	≥ 4	ISO 105-B02:2014
Strip Load	Warp/Weft	N/3cm	≥ 60	ISO 1421:2016
Color Fastness	Dry Rub		≥ 4	ISO 105-X12
	Wet Wipe	Level	$\geq 3,5$	
	Sweat		≥ 3.0	
Hydrolysis Resistance	70°C x95%RH Constant temperature and humidity for 7 weeks	After 7 weeks, the surface will not crack, powder or delaminate		ISO 2418:2002 ASTM D1148-13

www.vietkai.com
vkleather003@vietkai.com
Phone: +84 0971 472 494
WhatsApp: +84 0971 472 494



VIETKAI
To be kind

VK8

Bags | Car Seats | Shoes | Sofa



VIETKAI
To be kind

VK9

Bags | Car Seats | Shoes | Sofa

In Stock Colors



VK900



VK901



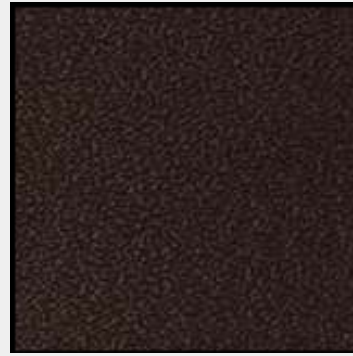
VK902



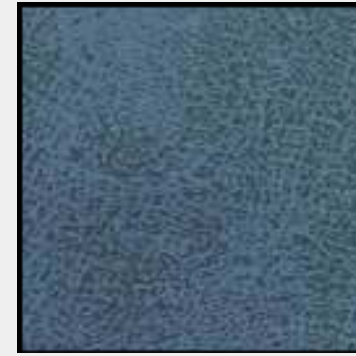
VK903



VK904



VK905



VK906



VK907



VK908

Matt Surface

Softness: ★★★★★

Thickness: $\geq 1.4\text{mm}$

Width: 1.37m

www.vietkai.com
vkleather003@vietkai.com
Phone: +84 0971 472 494
WhatsApp: +84 0971 472 494

IMPORTANT NOTE: While we always push ourselves to provide accurate imagery and color, please remember that materials may vary from swatch photos due to a variety of factors including lighting, monitor calibration, and dye lot changes. For color-critical use cases, we recommend reviewing a physical swatch.



VIETKAI
To be kind

VK9

Bags | Car Seats | Shoes | Sofa

Technical Specifications

Matt Surface
Softness: ★★★★★
Thickness: $\geq 1.4\text{mm}$
Width: 1.37m

Test Item	Unit	Standard Value	Testing Standards	
Tensile	Warp	≥ 250	ISO 1421:2016	
	Weft	≥ 300		
Elongation at break	Warp	≥ 15	ISO 1421:2016	
	Weft	≥ 20		
Tearing	Warp	≥ 60	ISO 4674-1:2016	
	Weft	≥ 60		
Wear-resistant	Martindale	Times	100,000	ISO 5470-2:2003
FoldingFastness	Normal	Times	100,000	ISO 5402-1:2011
	Low (- 205)	Times	30,000	
Yellowing Resistance	A method	Level	≥ 4	ISO 105-B02:2014
Strip Load	Warp/Weft	N/3cm	≥ 60	ISO 1421:2016
Color Fastness	Dry Rub		≥ 4	ISO 105-X12
	Wet Wipe	$\geq 3,5$		
	Sweat	≥ 3.0		
Hydrolysis Resistance	70°C x95%RH Constant temperature and humidity for 7 weeks	After 7 weeks, the surface will not crack, powder or delaminate		ISO 2418:2002 ASTM D1148-13

www.vietkai.com
vkleather003@vietkai.com
Phone: +84 0971 472 494
WhatsApp: +84 0971 472 494



VIETKAI
To be kind

VK9

Bags | Car Seats | Shoes | Sofa



VIETKAI
To be kind

VK - B

Bags | Car Seats | Shoes | Sofa

In Stock Colors



VK - B01



VK - B02



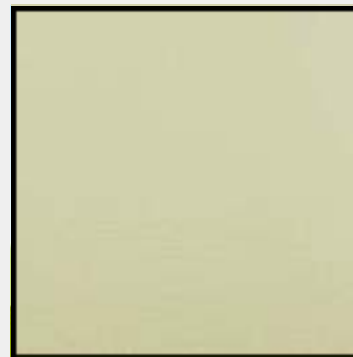
VK - B03



VK - B04



VK - B05



VK - B06



VK - B07



VK - B08



VK - B09



VK - B10



VK - B12



VK - B13



VK - B14



VK - B15



VK - B16



VK - B17

Matt Surface
Softness: ★★★★★
Thickness: ≥1.4mm
Width: 1.37m

www.vietkai.com
vkleather003@vietkai.com
Phone: +84 0971 472 494
WhatsApp: +84 0971 472 494

IMPORTANT NOTE: While we always push ourselves to provide accurate imagery and color, please remember that materials may vary from swatch photos due to a variety of factors including lighting, monitor calibration, and dye lot changes. For color-critical use cases, we recommend reviewing a physical swatch.



VIETKAI
To be kind

VK - B

Bags | Car Seats | Shoes | Sofa

In Stock Colors



VK - B18



VK - B19



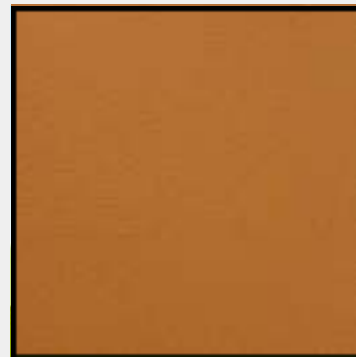
VK - B20



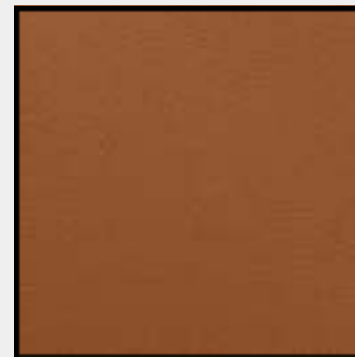
VK - B21



VK - B22



VK - B23



VK - B24



VK - B25



VK - B26



VK - B27



VK - B28



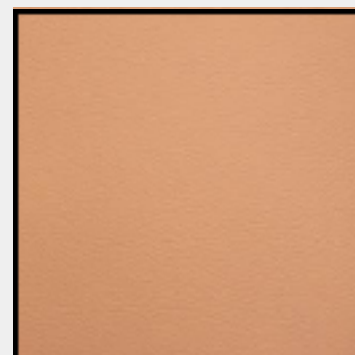
VK - B29



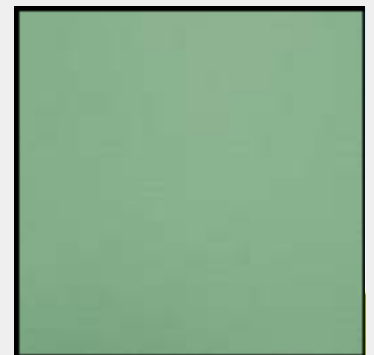
VK - B30



VK - B31



VK - B32



VK - B33

Matt Surface
Softness: ★★★★★
Thickness: ≥1.4mm
Width: 1.37m

www.vietkai.com
vkleather003@vietkai.com
Phone: +84 0971 472 494
WhatsApp: +84 0971 472 494

IMPORTANT NOTE: While we always push ourselves to provide accurate imagery and color, please remember that materials may vary from swatch photos due to a variety of factors including lighting, monitor calibration, and dye lot changes. For color-critical use cases, we recommend reviewing a physical swatch.



VIETKAI
To be kind

VK - B

Bags | Car Seats | Shoes | Sofa

In Stock Colors



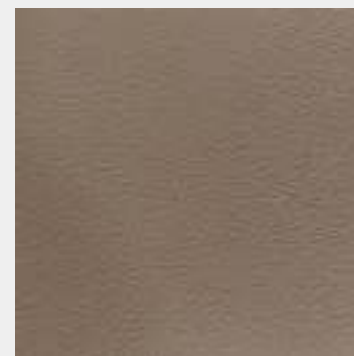
VK - B34



VK - B35



VK - B36



VK - B37

Matt Surface

Softness: ★★★★★

Thickness: $\geq 1.4\text{mm}$

Width: 1.37m

www.vietkai.com
vkleather003@vietkai.com
Phone: +84 0971 472 494
WhatsApp: +84 0971 472 494

IMPORTANT NOTE: While we always push ourselves to provide accurate imagery and color, please remember that materials may vary from swatch photos due to a variety of factors including lighting, monitor calibration, and dye lot changes. For color-critical use cases, we recommend reviewing a physical swatch.



VIETKAI
To be kind

VK - B

Bags | Car Seats | Shoes | Sofa

Technical Specifications

Matt Surface
Softness: ★★★★★
Thickness: $\geq 1.4\text{mm}$
Width: 1.37m

Test Item	Unit	Standard Value	Testing Standards	
Tensile	Warp	≥ 250	ISO 1421:2016	
	Weft	≥ 300		
Elongation at break	Warp	≥ 15	ISO 1421:2016	
	Weft	≥ 20		
Tearing	Warp	≥ 60	ISO 4674-1:2016	
	Weft	≥ 60		
Wear-resistant	Martindale	Times	100,000	ISO 5470-2:2003
FoldingFastness	Normal	Times	100,000	ISO 5402-1:2011
	Low (- 205)	Times	30,000	
Yellowing Resistance	A method	Level	≥ 4	ISO 105-B02:2014
Strip Load	Warp/Weft	N/3cm	≥ 60	ISO 1421:2016
Color Fastness	Dry Rub		≥ 4	ISO 105-X12
	Wet Wipe	$\geq 3,5$		
	Sweat	≥ 3.0		
Hydrolysis Resistance	70°C x95%RH Constant temperature and humidity for 7 weeks	After 7 weeks, the surface will not crack, powder or delaminate		ISO 2418:2002 ASTM D1148-13

www.vietkai.com
vkleather003@vietkai.com
Phone: +84 0971 472 494
WhatsApp: +84 0971 472 494



VIETKAI
To be kind

VK - B

Bags | Car Seats | Shoes | Sofa



VIETKAI
To be kind

VK - C

Bags | Car Seats | Shoes | Sofa

In Stock Colors



VK - C01



VK - C02



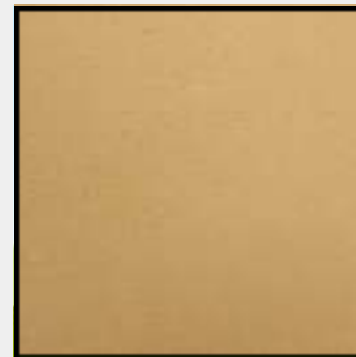
VK - C03



VK - C04



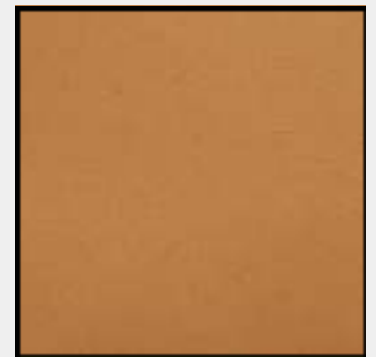
VK - C05



VK - C06



VK - C07



VK - C08



VK - C09



VK - C10



VK - C11



VK - C12



VK - C13



VK - C14



VK - C15



VK - C16

Matt Surface
Softness: ★★★★★
Thickness: $\geq 1.4\text{mm}$
Width: 1.37m

www.vietkai.com
vkleather003@vietkai.com
Phone: +84 0971 472 494
WhatsApp: +84 0971 472 494

IMPORTANT NOTE: While we always push ourselves to provide accurate imagery and color, please remember that materials may vary from swatch photos due to a variety of factors including lighting, monitor calibration, and dye lot changes. For color-critical use cases, we recommend reviewing a physical swatch.

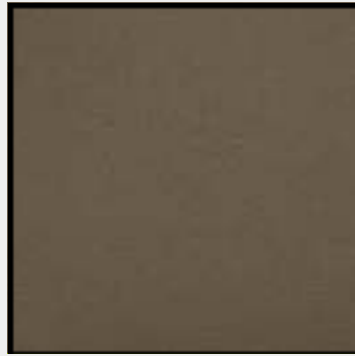


VIETKAI
To be kind

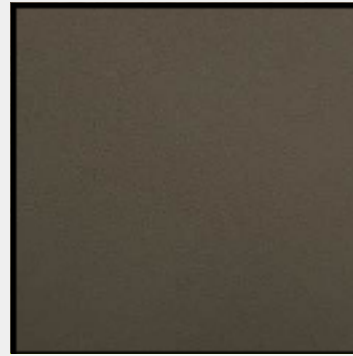
VK - C

Bags | Car Seats | Shoes | Sofa

In Stock Colors



VK - C17



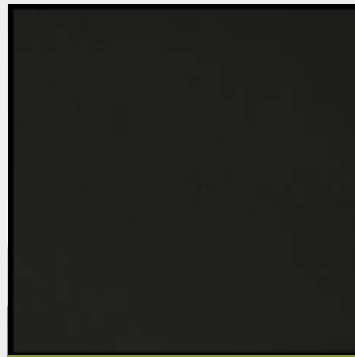
VK - C18



VK - C19



VK - C20



VK - C21



VK - C22



VK - C23



VK - C24

Matt Surface

Softness: ★★★★★

Thickness: $\geq 1.4\text{mm}$

Width: 1.37m

www.vietkai.com
vkleather003@vietkai.com
Phone: +84 0971 472 494
WhatsApp: +84 0971 472 494

IMPORTANT NOTE: While we always push ourselves to provide accurate imagery and color, please remember that materials may vary from swatch photos due to a variety of factors including lighting, monitor calibration, and dye lot changes. For color-critical use cases, we recommend reviewing a physical swatch.



VIETKAI
To be kind

VK - C

Bags | Car Seats | Shoes | Sofa

Technical Specifications

Matt Surface
Softness: ★★★★★
Thickness: $\geq 1.4\text{mm}$
Width: 1.37m

Test Item	Unit	Standard Value	Testing Standards	
Tensile	Warp	≥ 250	ISO 1421:2016	
	Weft	≥ 300		
Elongation at break	Warp	≥ 15	ISO 1421:2016	
	Weft	≥ 20		
Tearing	Warp	≥ 60	ISO 4674-1:2016	
	Weft	≥ 60		
Wear-resistant	Martindale	Times	100,000	ISO 5470-2:2003
FoldingFastness	Normal	Times	100,000	ISO 5402-1:2011
	Low (- 205)	Times	30,000	
Yellowing Resistance	A method	Level	≥ 4	ISO 105-B02:2014
Strip Load	Warp/Weft	N/3cm	≥ 60	ISO 1421:2016
Color Fastness	Dry Rub		≥ 4	ISO 105-X12
	Wet Wipe	$\geq 3,5$		
	Sweat	≥ 3.0		
Hydrolysis Resistance	70°C x95%RH Constant temperature and humidity for 7 weeks	After 7 weeks, the surface will not crack, powder or delaminate		ISO 2418:2002 ASTM D1148-13

www.vietkai.com
vkleather003@vietkai.com
Phone: +84 0971 472 494
WhatsApp: +84 0971 472 494



VIETKAI
To be kind

VK - C

Bags | Car Seats | Shoes | Sofa



VIETKAI
To be kind

A2351

Bags | Shoes | Sofa

Lead time
15-25 days

RP DY-153

Softness:★★★

Thickness: 1.3mm - 1.5mm

Width: 1.37m



A2351-1



A2351-2



A2351-3



A2351-4



A2351-5



A2351-6



A2351-7



A2351-8



A2351-9



A2351-10



A2351-11



A2351-12



A2351-13



A2351-14



A2351-15



A2351-16

www.vietkai.com
vkleather003@vietkai.com
Phone: +84 0971 472 494
WhatsApp: +84 0971 472 494

IMPORTANT NOTE: While we always push ourselves to provide accurate imagery and color, please remember that materials may vary from swatch photos due to a variety of factors including lighting, monitor calibration, and dye lot changes. For color-critical use cases, we recommend reviewing a physical swatch.



VIETKAI
To be kind

A2351

Bags | Shoes | Sofa

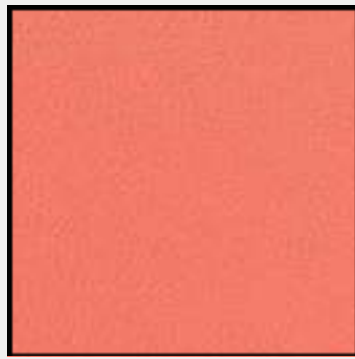
Lead time
15-25 days

RP DY-153

Softness:★★★

Thickness: 1.3mm - 1.5mm

Width: 1.37m



A2351-17



A2351-18



A2351-19



A2351-20



A2351-21



A2351-22



A2351-23



A2351-24



A2351-25



A2351-26



A2351-27



A2351-28



A2351-29



A2351-30



A2351-31



A2351-32

www.vietkai.com
vkleather003@vietkai.com
Phone: +84 0971 472 494
WhatsApp: +84 0971 472 494

IMPORTANT NOTE: While we always push ourselves to provide accurate imagery and color, please remember that materials may vary from swatch photos due to a variety of factors including lighting, monitor calibration, and dye lot changes. For color-critical use cases, we recommend reviewing a physical swatch.



VIETKAI
To be kind

A2351

Bags | Shoes | Sofa

Lead time
15-25 days



A2351-33



A2351-34



A2351-35



A2351-36



A2351-37



A2351-38



A2351-39



A2351-40

RP DY-153

Softness:★★★★

Thickness: 1.3mm - 1.5mm

Width: 1.37m

www.vietkai.com
vkleather003@vietkai.com
Phone: +84 0971 472 494
WhatsApp: +84 0971 472 494

IMPORTANT NOTE: While we always push ourselves to provide accurate imagery and color, please remember that materials may vary from swatch photos due to a variety of factors including lighting, monitor calibration, and dye lot changes. For color-critical use cases, we recommend reviewing a physical swatch.



VIETKAI
To be kind

A2351

Bags | Shoes | Sofa

Technical Specifications

	Test Item	Unit	Standard Value	Testing Standards
Tensile	Warp	N/3cm	≥250	ISO 1421:2016
	Weft		≥300	
Elongation at break	Warp	%	≥15	ISO 1421:2016
	Weft		≥20	
Tearing	Warp	N/3cm	≥60	ISO 4674-1:2016
	Weft		≥60	
Wear-resistant	Martindale	Times	100,000	ISO 5470-2:2003
FoldingFastness	Normal	Times	100,000	ISO 5402-1:2011
	Low (- 205)	Times	30,000	
Yellowing Resistance	A method	Level	≥4	ISO 105-B02:2014
Strip Load	Warp/Weft	N/3cm	≥60	ISO 1421:2016
Color Fastness	Dry Rub		≥4	ISO 105-X12
	Wet Wipe	≥3,5		
	Sweat	≥3.0		
Hydrolysis Resistance	70°C x95%RH Constant temperature and humidity for 7 weeks	After 7 weeks, the surface will not crack, powder or delaminate		ISO 2418:2002 ASTM D1148-13

RP DY-153

Softness:★★★★

Thickness: 1.3mm - 1.5mm

Wildth: 1.37m

www.vietkai.com
vkleather003@vietkai.com
Phone: +84 0971 472 494
WhatsApp: +84 0971 472 494



VIETKAI
To be kind

A2351

Bags | Shoes | Sofa



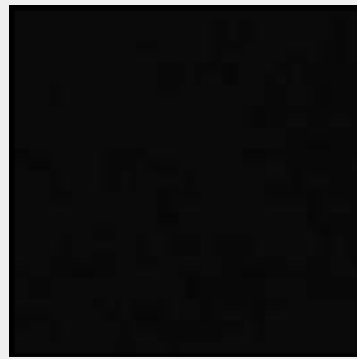
VIETKAI
To be kind

A2353

Bags | Shoes | Sofa

Lead time
15-25 days

RP CD-2101
Softness: ★★★
Thickness: 1.3mm
Wildth: 1.37m



A2353-1



A2353-2



A2353-3



A2353-4



A2353-5



A2353-6



A2353-7



A2353-8



A2353-9



A2353-10



A2353-11



A2353-12



A2353-13



A2353-14

www.vietkai.com
vkleather003@vietkai.com
Phone: +84 0971 472 494
WhatsApp: +84 0971 472 494

IMPORTANT NOTE: While we always push ourselves to provide accurate imagery and color, please remember that materials may vary from swatch photos due to a variety of factors including lighting, monitor calibration, and dye lot changes. For color-critical use cases, we recommend reviewing a physical swatch.



VIETKAI
To be kind

A2353

Bags | Shoes | Sofa

Technical Specifications

RP CD-2101
 Softness: ★★ ★
 Thickness: 1.3mm
 Width: 1.37m

Test Item	Unit	Standard Value	Testing Standards	
Tensile	Warp	≥250	ISO 1421:2016	
	Weft	≥300		
Elongation at break	Warp	≥15	ISO 1421:2016	
	Weft	≥20		
Tearing	Warp	≥60	ISO 4674-1:2016	
	Weft	≥60		
Wear-resistant	Martindale	Times	100,000	ISO 5470-2:2003
FoldingFastness	Normal	Times	100,000	ISO 5402-1:2011
	Low (- 205)	Times	30,000	
Yellowing Resistance	A method	Level	≥4	ISO 105-B02:2014
Strip Load	Warp/Weft	N/3cm	≥60	ISO 1421:2016
Color Fastness	Dry Rub		≥4	ISO 105-X12
	Wet Wipe	≥3,5		
	Sweat	≥3.0		
Hydrolysis Resistance	70°C x95%RH Constant temperature and humidity for 7 weeks	After 7 weeks, the surface will not crack, powder or delaminate		ISO 2418:2002 ASTM D1148-13

www.vietkai.com
 vkleather003@vietkai.com
 Phone: +84 0971 472 494
 WhatsApp: +84 0971 472 494



VIETKAI
 To be kind

A2353

Bags | Shoes | Sofa



VIETKAI
To be kind

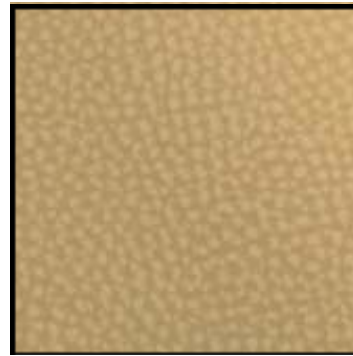
A2358

Bags | Shoes | Sofa

Lead time
15-25 days



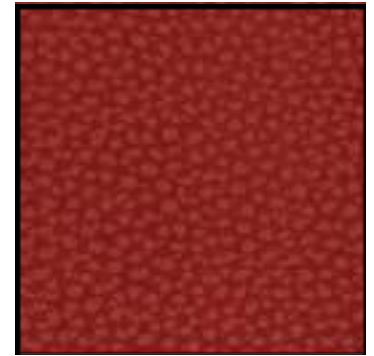
A2358-8



A2358-9



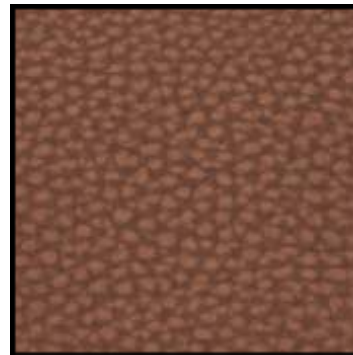
A2358-10



A2358-11



A2358-12



A2358-13



A2358-14

RP 7M9018

Softness: ★★★

Thickness: 1.3mm - 1.5mm

Width: 1.37m

www.vietkai.com
vkleather003@vietkai.com
Phone: +84 0971 472 494
WhatsApp: +84 0971 472 494

IMPORTANT NOTE: While we always push ourselves to provide accurate imagery and color, please remember that materials may vary from swatch photos due to a variety of factors including lighting, monitor calibration, and dye lot changes. For color-critical use cases, we recommend reviewing a physical swatch.



VIETKAI
To be kind

A2358

Bags | Shoes | Sofa

Technical Specifications

	Test Item	Unit	Standard Value	Testing Standards
Tensile	Warp	N/3cm	≥ 250	ISO 1421:2016
	Weft		≥ 300	
Elongation at break	Warp	%	≥ 15	ISO 1421:2016
	Weft		≥ 20	
Tearing	Warp	N/3cm	≥ 60	ISO 4674-1:2016
	Weft		≥ 60	
Wear-resistant	Martindale	Times	100,000	ISO 5470-2:2003
Folding Fastness	Normal	Times	100,000	ISO 5402-1:2011
	Low (- 205)	Times	30,000	
Yellowing Resistance	A method	Level	≥ 4	ISO 105-B02:2014
Strip Load	Warp/Weft	N/3cm	≥ 60	ISO 1421:2016
Color Fastness	Dry Rub		≥ 4	ISO 105-X12
	Wet Wipe	Level	$\geq 3,5$	
	Sweat		≥ 3.0	
Hydrolysis Resistance	70°C x95%RH Constant temperature and humidity for 7 weeks	After 7 weeks, the surface will not crack, powder or delaminate		ISO 2418:2002 ASTM D1148-13

Matt Surface

Softness: ★★★★★★

Thickness: 1.25mm - 1.4mm

Width: 1.37m

www.vietkai.com
vkleather003@vietkai.com
Phone: +84 0971 472 494
WhatsApp: +84 0971 472 494



VIETKAI
To be kind

A2358

Bags | Shoes | Sofa

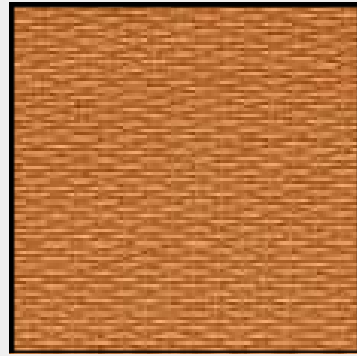


VIETKAI
To be kind

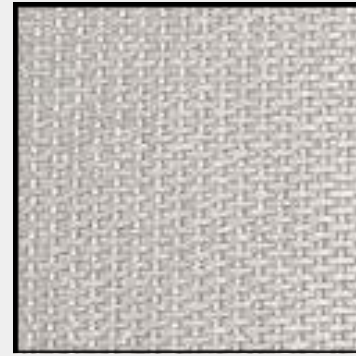
A2367

Bags | Shoes | Sofa

Lead time
15-25 days



A2367-1



A2367-2



A2367-3



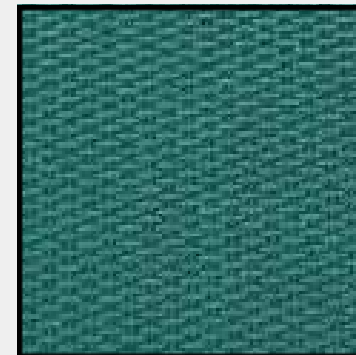
A2367-4



A2367-5



A2367-6



A2367-7

RP B-376

Softness: ★★★

Thickness: 1.3mm - 1.5mm

Width: 1.37m

www.vietkai.com
vkleather003@vietkai.com
Phone: +84 0971 472 494
WhatsApp: +84 0971 472 494

IMPORTANT NOTE: While we always push ourselves to provide accurate imagery and color, please remember that materials may vary from swatch photos due to a variety of factors including lighting, monitor calibration, and dye lot changes. For color-critical use cases, we recommend reviewing a physical swatch.



VIETKAI
To be kind

A2367

Bags | Shoes | Sofa

Technical Specifications

RP B-376
 Softness: ★★ ★
 Thickness: 1.3mm - 1.5mm
 Width: 1.37m

Test Item	Unit	Standard Value	Testing Standards	
Tensile	Warp	≥250	ISO 1421:2016	
	Weft	≥300		
Elongation at break	Warp	≥15	ISO 1421:2016	
	Weft	≥20		
Tearing	Warp	≥60	ISO 4674-1:2016	
	Weft	≥60		
Wear-resistant	Martindale	Times	100,000	ISO 5470-2:2003
Folding Fastness	Normal	Times	100,000	ISO 5402-1:2011
	Low (- 205)	Times	30,000	
Yellowing Resistance	A method	Level	≥4	ISO 105-B02:2014
Strip Load	Warp/Weft	N/3cm	≥60	ISO 1421:2016
Color Fastness	Dry Rub		≥4	ISO 105-X12
	Wet Wipe	Level	≥3,5	
	Sweat		≥3.0	
Hydrolysis Resistance	70°C x95%RH Constant temperature and humidity for 7 weeks	After 7 weeks, the surface will not crack, powder or delaminate		ISO 2418:2002 ASTM D1148-13

www.vietkai.com
 vkleather003@vietkai.com
 Phone: +84 0971 472 494
 WhatsApp: +84 0971 472 494



VIETKAI
 To be kind

A2367

Bags | Shoes | Sofa

CONTACT INFORMATION

Address

Office address: 533/8 Nguyen Tri Phuong Str., Ward 8, District 10 HCMC

E-mail: vkleather003@vietkai.com

Phone number: 028 6680 5995

Website: www.vietkai.com

Social Media



VIETKAI

To be kind